

Diary dates

Coming up . . .

- Monday 13th – Friday 17th September
Maori Language Week
- Monday 13th September **Tāwari Parent Teacher Interviews (online)**
- Tuesday 14th September **Tāwari Parent Teacher Interviews (online)**
- Wednesday 15th September **PRACTICE lockdown drill (Preschool only)**
- Friday 17th September **Whānau Hui**
- Monday 20th September
Board/Council Meeting 7pm Tāwari class
- Friday 24th September **Peace Day (school staff/students only)**

Level 2

Under current level 2 restrictions unfortunately we are unable to welcome whānau onsite. This means that some meetings and events will be affected. We will update you with any changes as soon as possible and look forward to welcoming you back onsite soon.

School sports T's – order yours today

Online sports t-shirt orders are open and make ordering quicker and easier. If you would like to order a shirt (price \$48) please complete the order form [here](https://forms.gle/noMBNkTd44UxZ4x9) and make payment via internet banking or eftpos at the school office. All sizing info is on the form and delivery will be to families at the start of term 4. Orders close this Thursday 16th September. Link: (<https://forms.gle/noMBNkTd44UxZ4x9>).

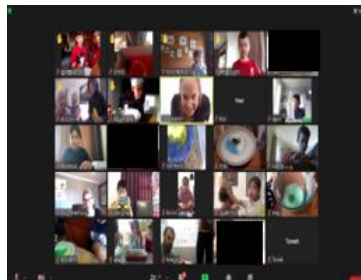


This week

nau mai, hoki mai, Welcome Back

By Ava Szabo – Principal

It has been lovely to see everyone back at school on Thursday; we have missed you all. Our online learning environment is now well established and is in place across all areas of the school. I was lucky enough to sit in on a few of these online sessions; there was so much happening, drawing lessons, science experiments, read aloud and so much more, it was such a treat for me. Here are a few zoom photos for you to enjoy.



Now that we are back at school and at Alert Level 2 there are further changes in place that mean we will need to make some additional adjustments. We are all hopeful we won't have to remain at Level 2 for very long, and I appreciate your willingness and effort to follow the protocols that are in place.

As we know at Alert Level 2 we are not able to have our whānau on site for drop off and collection of children. Now we also have the additional restriction of 50 people onsite for indoor events as well as 100 people for outdoor events.

This will mean some changes to our scheduled gatherings this term. Peace Day will look a little different this year. Our Peace Day committee is working hard and the event will still go ahead albeit with a few alterations. We are not able to host the breakfast and sadly we cannot invite you to join us. The other event that will be impacted this term is our Kawakawa 'Coffee House'. Our ākonga will still prepare and participate in a coffee house performance, but instead of having a live audience we will record and share.

One area that we won't have to change is our celebration of Te Wiki o Te Reo Māori. Tomorrow (Tuesday), our whole student community will join the rest of Aotearoa at 12 noon to be part of the movement to get 2 million people speaking, singing, reading Te Reo Māori all at the same time. As we did last year, we will be joining in the moment with waiata. What a milestone this will be. Thank you to our Māori Language Week committee for making this happen.

I hope Term 4 will be a time when we are able to open the gates and welcome you all back onsite. Until then:

Nāku te rourou nāu te rourou ka ora ai te iwi

With your basket and my basket the people will live

Te wiki o te reo Māori (Māori language week)

This week is Te Wā Tuku Reo Māori and tomorrow at 12pm Wā Ora will join the rest of New Zealand to help create the biggest celebration of te reo Māori yet.

[Click here](#) if you'd like to learn more.

Preschool Holiday Programme

Bookings are now open for the next school holiday programme. These holidays we are again offering two day and three day options in addition to the full week option.

Costs:

2 days - \$70

3 days - \$105

Full week - \$175

The programme operates from 8.45am - 3pm each day. Morning tea is included but you will need to provide lunch as per our food procedure.

After school care is available from 3pm-5pm at the normal term charges and there will be no before school care. Please contact anna@waora.school.nz if you have any questions or would like to book.

Booking close Monday 27th September.

Preschool parent/teacher meetings

Week 10– Mon 27th Tue 28th & Wed 29th September

Below is the booking website address and code for the upcoming Preschool parent/teacher meetings.

<https://www.schoolinterviews.co.nz/code?code=dqtgd> and use the code **dqtgd**

If you have other children in primary or high school, you will receive separate booking information for these.

Welcome Back



It is great to have everyone back in class. We are so happy to see you all 😊

Level 2 delta ways of operating

Just reiterating the key messages for how we must operate at level 2.

Preschool

Drop-off and pick up for all tamariki is at the preschool gate from 8.40 am–9.05 am. If you arrive after 9.05 am you need to contact Anna (preschool DP) on 021 263 7516 to open the gate and welcome you. Please do NOT enter school with your child. Morning tea and lunch will be provided for the children each day. There is no signing of the weekly attendance register at Alert Level 2.

Primary school

Drop off and pick up is at the school gate by the pedestrian crossing with parents remaining offsite where possible during Alert Level 2. The gate will be unlocked at 8.30 am by staff for children to enter. Primary students need to bring morning tea and lunch that can be eaten as is from their lunch box (no access to kitchens). They must also bring their own named (full) water bottle.

High school

If a student is late, they must call the office but head straight to class. Students need to bring lunch that can be eaten as is from their lunch box (no access to the kitchen). They must also bring their own (full) water bottle.

Before and after school care

Before school care is open from 8 am. Parents should drop their children via the back door of the room at the far end of the staff car park. PLEASE DO NOT PARK IN THE STAFF CAR PARK. After school care is also open. Whānau will need to enter via the preschool playground and come to the room to collect as normal. You will be required to sign the contact tracing register.

School office:

Contact the school office by email or phone where possible (email: office@waora.school.nz; landline: 04 567 2377; mobile: 029 770 4286). If you need to see an office staff member, please ring in advance and staff will let you in via the back door between the staffroom and Rātā class. There is a 1-in-1-out policy and you will be required to sign the contact tracing register. For lateness or absences please notify the office via the school app, email, text or phone in the usual way.

Level 2 ways of operating (cont.)

General:

The primary playground is unavailable before 8.30 am and after 3 pm for playing. There is no onsite toilet for whānau during Alert Level 2.

PRACTICE lockdown drill (PRESCHOOL ONLY):

Wednesday 15th September



We are holding a lockdown drill this Wednesday 15th September at 11.30am for the **preschool only**. This is a Ministry requirement for ECE sectors every 3 months. Part of our procedure is to alert parents via email and the school communications app that we are in lockdown. Please be aware that you will receive 'PRACTICE Lockdown Drill' notifications. You will not need to do anything when you receive these.

Peace Day



Peace day celebrations will go ahead on Friday 24th September. Unfortunately, due to current Level 2 restrictions this will only be for staff and students as we cannot currently have parents onsite.

Kids Yoga Camp



KidsYoga Camp

School Holiday Program

9am-3pm

**Ages 4-7 Wednesday 6th
and 13th October**

**Ages 8-12 Thursday 7th
and 14 October**

San Antonio School,

Eastbourne

\$55 per session



kutumbayoganz@gmail.com
www.kutumbayoga.co.nz