

Diary dates

- Tuesday 21st July **Kawakawa parent student teacher Interviews**
- Tuesday 21st–Wednesday 22nd July **Tāwari parent student teacher interviews**
- Friday 24th July **cross country Y4–13**
- Friday 24th July **Matariki hakari (feast)**
- Monday 27th July **PTA meeting**
- Wednesday 29th July **parent education evening** (Raising Resilient children with Kathryn Berkett) 7 pm Tōtara class
- Friday 31st July **Matariki concert** 10 am in T2
- Sunday 2nd August **working bee 9 am–12 noon**

Matariki 2020



Matariki hakari

The hakari (feast) will be held this Friday 24th July from 5–7 pm in T2 at the high school. Please bring a dish to share (label your ingredients so those with allergies can avoid) and being mindful of our environment, whānau will need to bring their own plates, bowls, cutlery, cups. Free coffee cart beverages and entertainment to celebrate.

This week

Self-construction and the human tendencies

By Ava Szabo – Principal

During the school holidays I was lucky enough to attend the primary assistants course run by Rebecca Dallam, an experienced AMI 6–12 trainer. The course took place via Zoom each day and will finish during the term 3 holidays. This was incredibly valuable and a great introduction to the 6–12 (2nd plane) child.

In the first week we studied the concept of self-construction and the human tendencies; the second week focused on the cosmic curriculum.

Maria Montessori referred to self-construction as the child's capacity to develop their own personality and abilities through purposeful activity (what Montessori calls work). No one can 'self-construct' us; this is something each of us must do for ourselves. As adults, our role is to support self-construction through a relationship of respect for, and observation of, the child.

When observing the child, Montessori determined that all children behave in certain ways and display certain tendencies. The tendencies we studied are explained below.

Exploration: Of the physical environment, both indoor and outdoor, and can also extend to exploration with the mind — the intellectual environment.

Orientation: This helps us orient ourselves and understand where things are, helping with exploration and enabling the child to make sense of their environment.

Order: In the second plane, order of the mind is more important than physical order. Social order is also important and the 6–12 child spends a lot of time on rules and how we work together.

Work/activity: Meaningful work is needed to complete self-construction. Work for the primary child will often involve working in groups and collaborating. A 6–12 class is not a quiet class.

Manipulation: This refers to the work of the hand; it is important a child can create.

Communication: The second plane child is a social being; language, discussion and sharing of ideas are key parts of learning.

Gregario: This is a Montessori word describing a tendency towards social expression.

Abstraction: The ability to take concrete, sensory experiences and visualise and develop these further in our mind.

Imagination: The ability to take something understood and make it something new.

Repetition: Learning something new requires practice many times to embed the new understanding. Variety will entice the child to want to do the activity again and again.

Measurement: This fosters the mathematical mind of the child and is offered through some of the great lessons.

Independence: This requires that adults do not interfere but let the child do it himself unhindered.

As you can see there are many tendencies to observe in a child, all of which are important on the journey to self-construction. My next newsletter will continue this journey with the Cosmic Curriculum.

Sport**Cross country**

The Wā Ora cross country will be held this Friday 24th July at 9.30 am from the netball court, Waddington Drive campus. The course for years 4–13 is the same as last year; maps are displayed in classrooms. Years 1–3 will follow a course set up in the primary school playground. Please remind students to wear suitable clothing and footwear... and to bring a water bottle. As this is a school community event, all students are expected to participate. Any student seeking an exemption will require a doctor's certificate.

Parent education evening


Raising Resilient Children

Guest speaker: Kathryn Berkett

All Wā Ora whānau and friends are warmly invited to attend our term 3 parent education evening next Wednesday 29th July in Tōtara classroom at 7 pm. We are proud to host renowned speaker/trainer Kathryn Berkett who will speak about 'Raising Resilient Children' and share how we as parents and a community can help our children develop resilience. For more information on Kathryn, please click: <http://www.engagetraining.co.nz/meet-your-trainer.html>. There is no charge to attend this evening.

Term 3 school accounts

School accounts were emailed to families last week. You can pay by internet, cash, cheque or eftpos (savings/cheque) at the office.

Instalment dates are as follows:

Instal 1: due Wednesday 29th July.

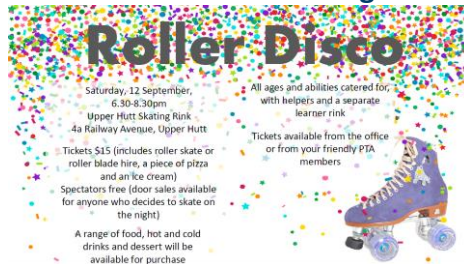
Instal 2: due Wednesday 12th August.

Instal 3: due Wednesday 26th August.

Further information containing account numbers and payment options, is included in the attached 'Accounts Information Letter'.

Matariki Daytime concert

Whānau are invited to join us for the whole school performance a week later on Friday 31st (week 2) at 10 am in T2 at the high school. Come along to watch your tamariki sing waiata and present creation stories.

PTA roller disco — for all ages!

Saturday 12th September at the Upper Hutt skating rink from 6.30–8.30 pm. \$15 entry covers skate hire, a slice of pizza and an ice cream. Spectators are free and tickets can be bought from the school office.

PTA meeting

The PTA meet next Monday 27th July at 7 pm at Brew'd Boulcott. All Wā Ora whānau welcome. Contact Kelly on 027 361 1751.

PTA Fundraiser

If you are looking to purchase a sun hat or drink bottle for your child (especially when required for term 4) or are interested in an emergency kit, look online here:

<https://fundraisingidairz.org/>. With every sale, a donation comes directly back to our school! The items will also be on display in the office.

Working bee

Please check below for your eldest child's name to attend this SUNDAY working bee. Contact the office with any queries.

Sunday 2nd August

9am – 12noon

Quynh-Nhu Ho	Zeta Ford-Robinson
Tilak Patel	Amélie De Nardi Cooke
Rose Russell	Nyla Daud
Gabriel Opie	Oliver Harrison
Carla Horspool	Poppy-Jane Humphries
Zoe Mildenhall	Ava Hunt-Ingledew
Jack Pearce	Zoe Johnston
Lucia Falconer	Eva Lamb
Evan Atkinson	Aria Landall
Dilynn Atkins	Logan McShane
Colton Barnes	Moyana Nordstrand
James Devine	Rosemary Owen
Cohen Partridge	Eli Shearer
Karun Sologar	Vanisha Tandon
Tully Whittington-Werry	

Teacher Only-Day cancelled

We have just been notified by the Ministry of Education that there is no longer a teacher only day on Tuesday 4th August (week 3) as we had earlier communicated. This will now be a normal school day for ALL preschool, primary and high school students. We apologise for any inconvenience caused by this late change of plan.

Volunteers sought

If you are able to provide reading support or are interested in being an NCEA reader/writer, please contact Juliette George for more details (juliette@waora.school.nz).

Please stay off the neighbourhood berms

Please be mindful when turning in the neighbouring streets to use people's driveways and not drive up and over berms – this is creating a lot of mud for residents at this time of year.

**Anne Frank exhibition at Expressions Upper Hutt**

'Let me be myself – The Life Story of Anne Frank' explores what life was like for Anne and her family during the second world war. Her story from birth to death in the Bergen-Belsen concentration camp is depicted using large scale images from the world around her. No admission charge.

Thinking of selling your house?

Kia ora. If, from your referral, we list and sell your home in the Lower Hutt area, we will donate \$500 to Wā Ora Montessori School. Contact us today for a no obligation appraisal. Supporting Wā Ora Montessori School. Jodie and Eugene Winterburn. Red Coats Professionals Lower Hutt. 022 462 0121 teamwinterburn@redcoats.co.nz.



Supporting the Child Cancer Foundation for over 20 years.